
CHECKLINE HOUSE

FLATS 1 - 21, 186 - 192 DARKES LANE, POTTERS BAR EN6 1AF



OVERVIEW

Checkline House is a luxurious development of twenty one 1 and 2 bedroom apartments located in the heart of Potters Bar. All apartments will be finished to exacting standards to include high quality German kitchens, contemporary bathrooms, built-in wardrobes and some with outside space. There will also be a lift to all floors and gated underground car-parking.

LOCATION

Situated in the town centre, one could not wish for a more convenient location. Potters Bar is located just outside the M25 and has many amenities including King George's field, Furzefield Leisure centre and Potters Bar swimming club, tennis club and golf club. The town also has the Wyllyotts centre - a theatre, cinema and events venue.

TRANSPORT

Checkline House is within a two-minutes walk to Potters Bar railway station located on the Great Northern route. It takes approximately 14 minutes to get to Kings Cross Station. The A1, M1 and M25

are all easily accessible and give ease of access to Heathrow and Gatwick Airports as well as London Luton. There is also a bus depot that service local bus routes as well as some London bus routes.

SHOPPING

The town centre boasts many quality restaurants, supermarkets, banks and coffee shops. Nearby town Barnet has the Spires shopping centre, offering many designer boutiques, high street names and independent retailers. Barnet also has a local market every Wednesday and Saturday.

EDUCATION

There are many highly regarded primary and secondary schools in the local area, whether state or private, including Dame Alice Owen's and Lochinver High School to name a few.



SPECIFICATION

KITCHEN

Rot Punkt premium designed German high gloss fitted kitchen with soft self closing devices
Quartz stone worktops with glass upstands
Stainless steel 1½ bowl sink
Brushed steel kitchen mixer tap with under mounted sink
Siemens integrated fan assisted electric oven, electric hob and microwave
Siemens brushed steel extractor hood
Integrated dishwasher
Integrated fridge/freezer
Washer/dryer
LED lighting

BATHROOMS AND EN-SUITES

White sanitary ware
High gloss vanity cupboard below basin with slide out drawer
Mirror wall mounted over basin with light
Handheld shower with wall bar and shower screen provided above baths
Concealed cistern housing, toilet finished with stone mantle
Close coupled toilet to en-suites
Chrome towel radiators in bathrooms and en-suites
Bespoke low rise shower tray
Glass shower screen
Contemporary porcelain floor and wall tiles in all bathrooms and en-suites

LIVING/DINING

Recessed LED ceiling downlighters
Oak timber engineered wide plank flooring
Wall mounted speakers ready for Sonos Wifi System

BEDROOM

Recessed LED ceiling down lighters
High gloss built-in wardrobes
Carpets

SECURITY AND ENERGY EFFICIENCY

Entry TV screen supplied to each property
Multi-point locking and spy-hole to all property entrance doors
Smoke detectors in each property (mains operated with battery backup)
Individual letterboxes within foyer
Double-glazed polyester powder coated aluminium windows and communal external front doors

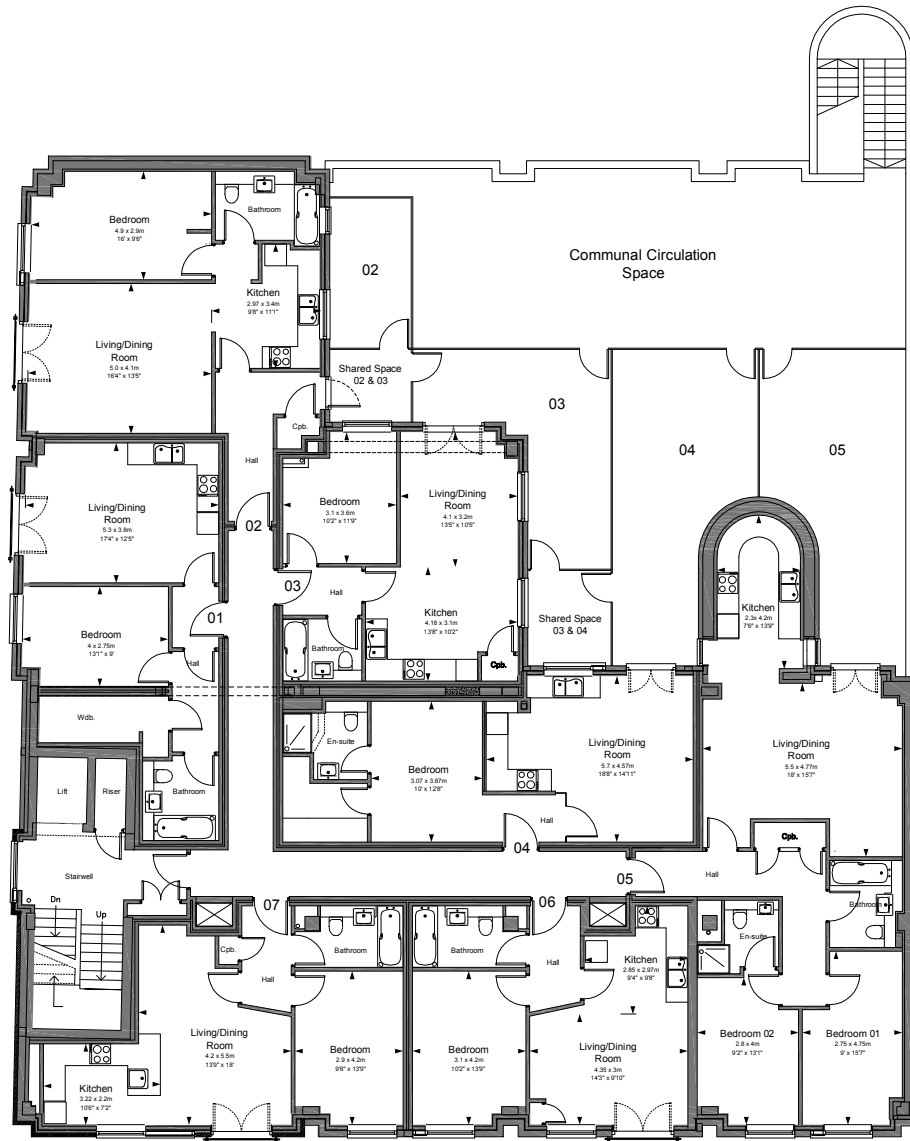
GENERAL SPECIFICATION

Flush faced doors finished in white satin wood
Brushed stainless steel ironmongery on all doors
CAT 6 Cabling
Wired for satellite
Door Frames, skirtings, architraves finished in white satin wood paint
Built-in utility cupboard to some of the apartments
Contemporary wet radiator system

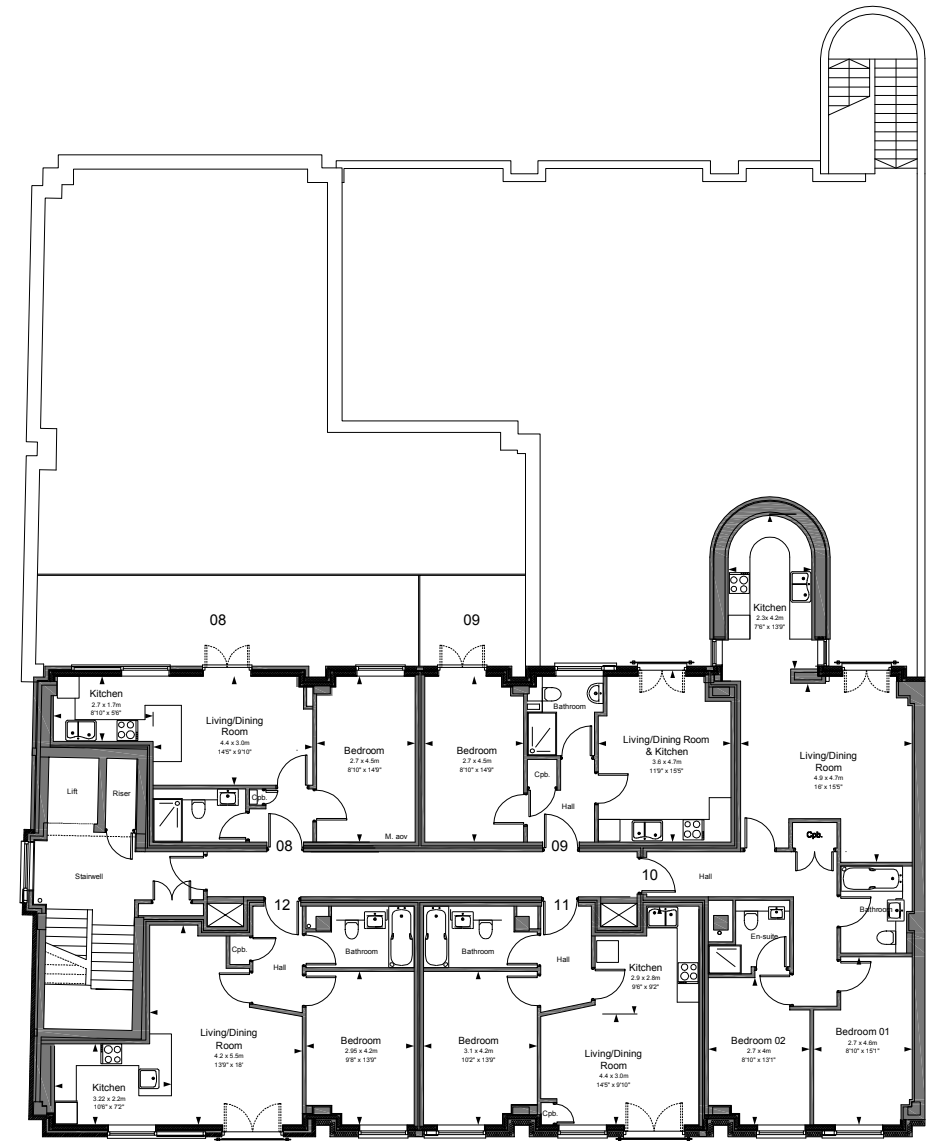
GUARANTEE AND TENURE

All apartments come with 10 Build Zone Guarantee
Apartments: 125 year lease

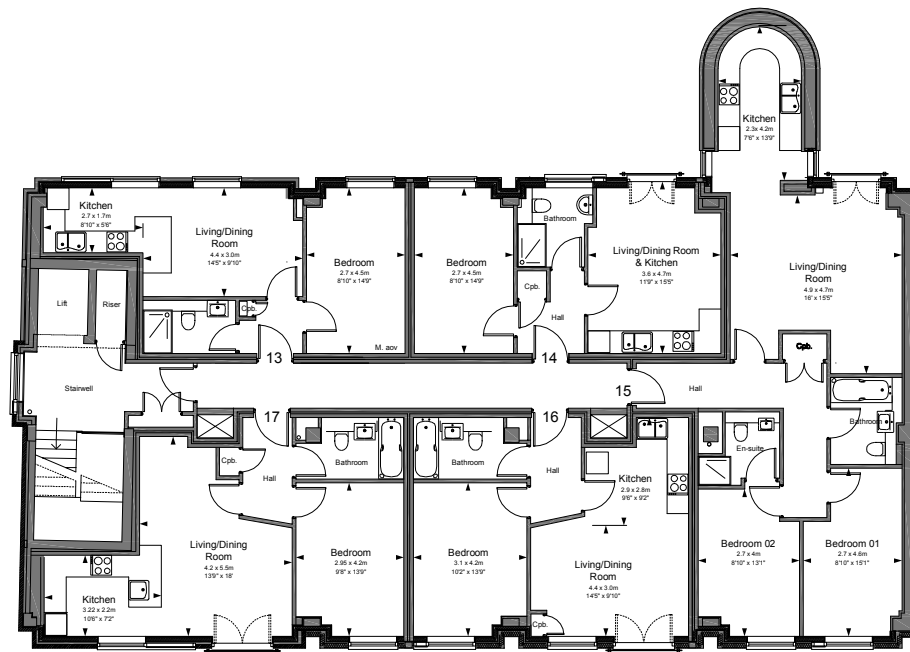




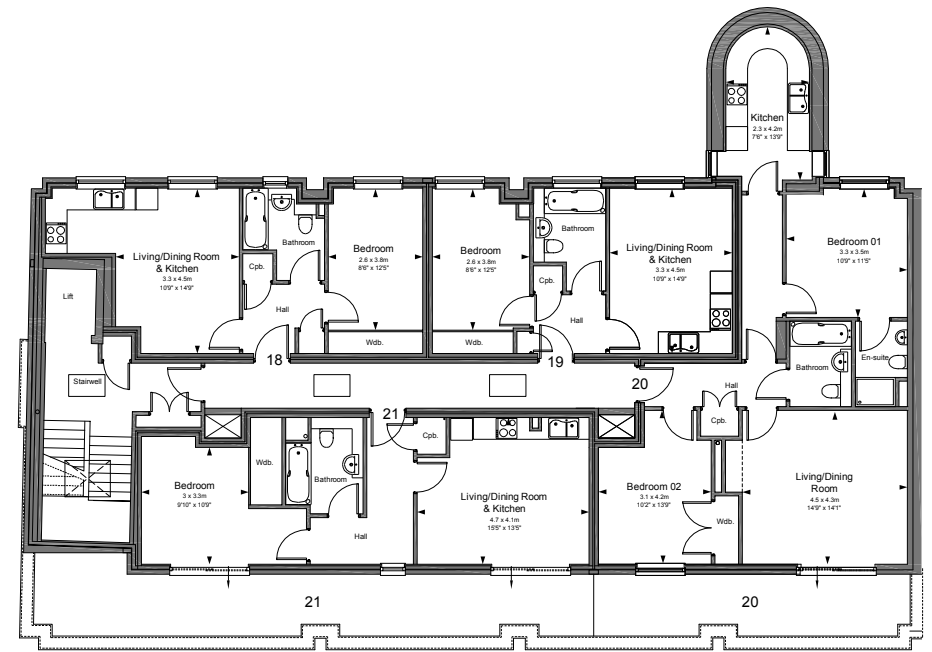
First Floor



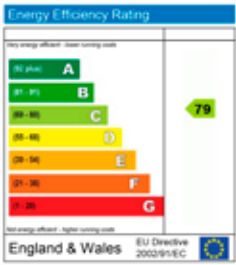
Second Floor



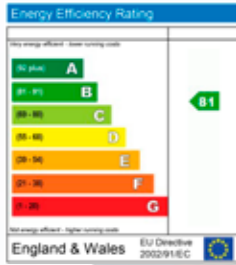
Third Floor



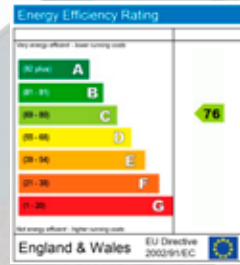
Fourth Floor



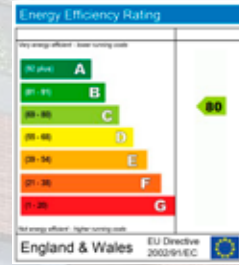
Flat F1



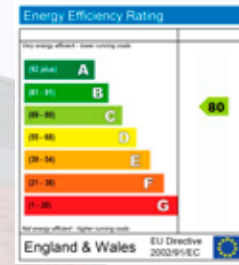
Flat F2



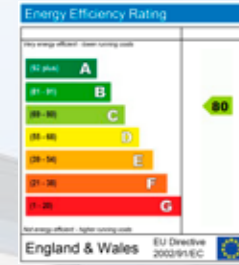
Flat F3



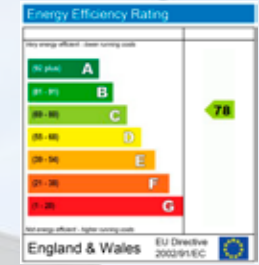
Flat F4



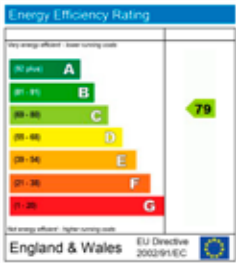
Flat F5



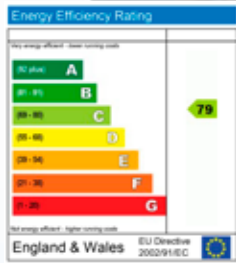
Flat F6



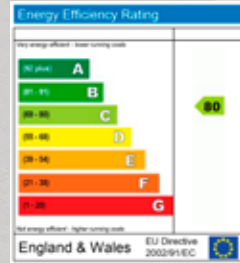
Flat F7



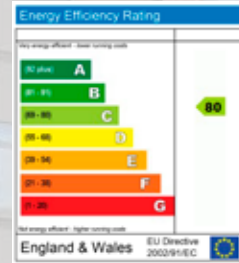
Flat S1



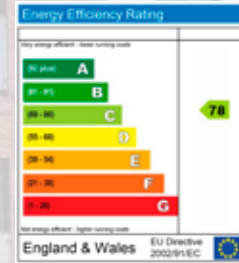
Flat S2



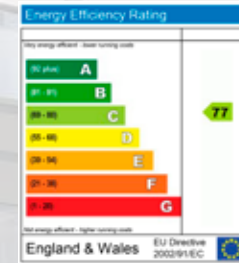
Flat S3



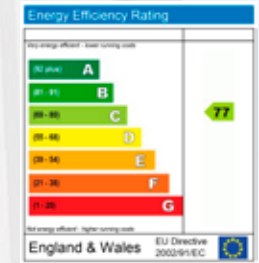
Flat S4



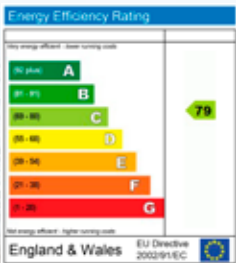
Flat S5



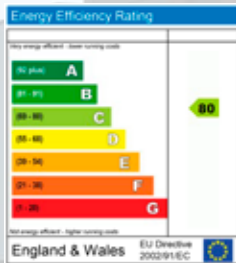
Flat T1



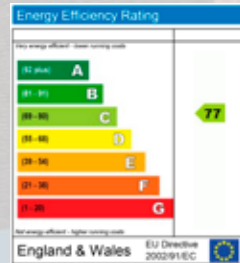
Flat T2



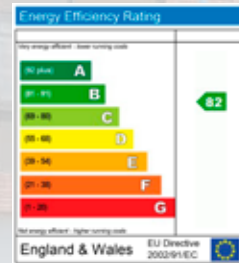
Flat T3



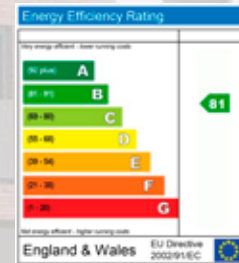
Flat T4



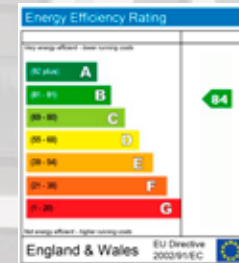
Flat T5



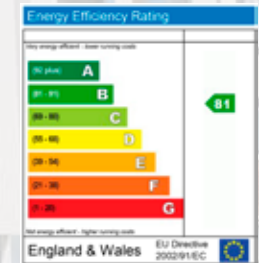
Flat 18



Flat 19



Flat 20



Flat 21



ALDENHAM RESIDENTIAL
PROPERTY DEVELOPMENT

Misrepresentation Act 1967. This brochure and the descriptions and measurements herein do not constitute representation and whilst every effort has been made to ensure accuracy, this cannot be guaranteed. 324249

Brochure by **capital group** 020 8671 5448