

HOUSE 03

The HAINES

LARGE SEMI-DETACHED, 3 BEDROOM

GROUND FLOOR

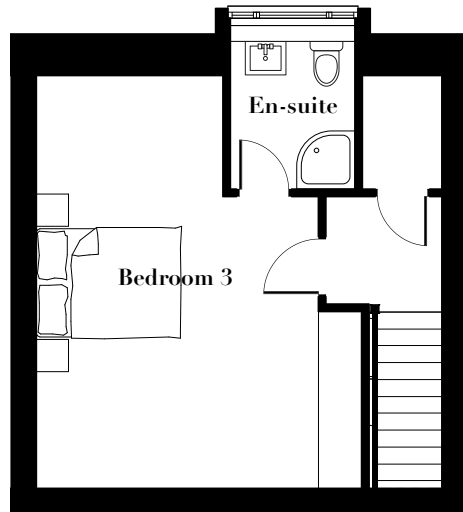
HALL	1.0 X 5.8m
WC	0.8 X 2.0m
CUPBOARD/STORAGE	0.8 X 0.8m
LOUNGE	3.5 X 4.6m
KITCHEN/DINING	5.6 X 4.6m

FIRST FLOOR

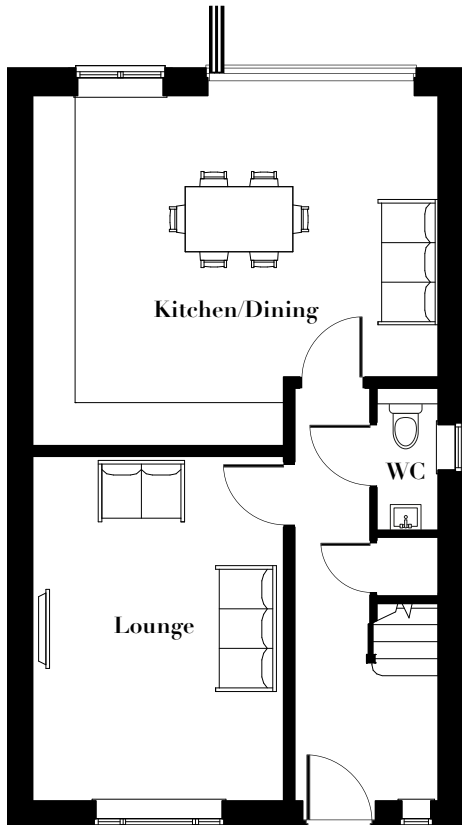
STUDY	2.0 X 3.6m
BATHROOM	2.4 X 1.6m
BEDROOM 1	3.5 X 4.0m
BEDROOM 2	3.5 X 3.6m

SECOND FLOOR

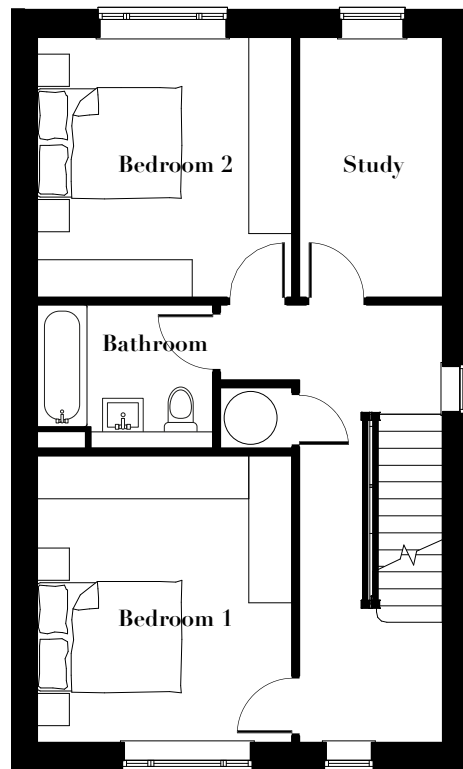
CUPBOARD/STORAGE	1.1 X 1.6m
BEDROOM 3	4.5 X 5.8m
EN-SUITE	1.7 X 2.2m
TOTAL	1,515 sq.ft



SECOND FLOOR



GROUND FLOOR



FIRST FLOOR

While every attempt has been made to ensure the accuracy of the floor plan shown, all measurements, positioning, fixtures, fittings and any other data shown are an approximate interpretation for illustrative purposes only and are not to scale. No responsibility is taken for any error, omission, miss-statement or use of data shown.