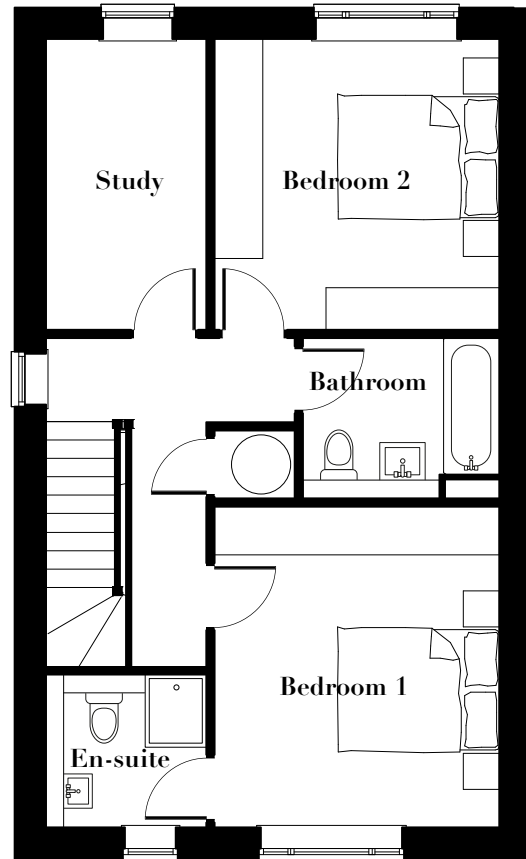
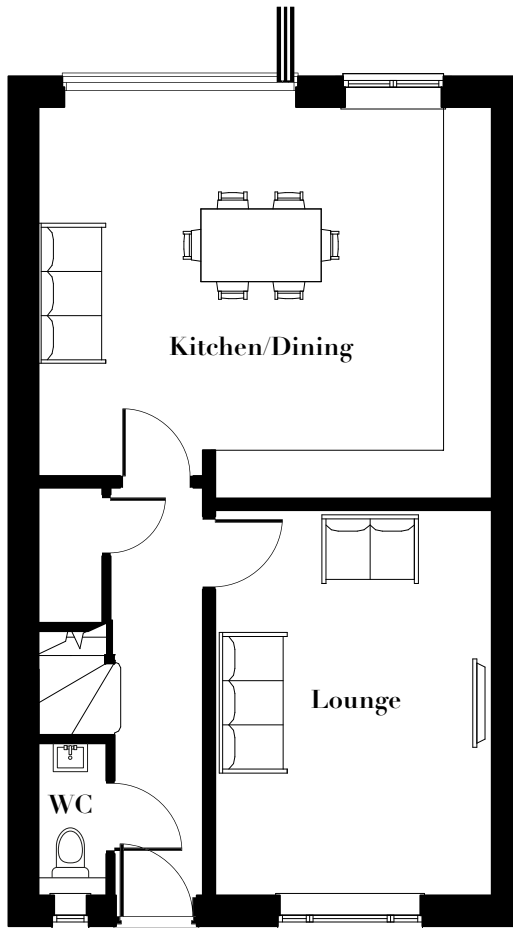


HOUSE 04

The BALDWIN

LARGE SEMI-DETACHED, 2 BEDROOM



Whilst every attempt has been made to ensure the accuracy of the floor plan shown, all measurements, positioning, fixtures, fittings and any other data shown are an approximate interpretation for illustrative purposes only and are not to scale. No responsibility is taken for any error, omission, miss-statement or use of data shown.

GROUND FLOOR

HALL	1.0 X 5.1m
WC	0.8 X 2.0m
CUPBOARD/STORAGE	0.8 X 1.9m
LOUNGE	3.5 X 4.6m
KITCHEN/DINING	5.6 X 4.6m

FIRST FLOOR

STUDY	2.0 X 3.6m
BATHROOM	2.3 X 1.6m
BEDROOM 1	3.5 X 4.0m
EN-SUITE	2.0 X 1.9m
BEDROOM 2	3.5 X 3.6m
TOTAL	1,195 sq.ft